

# Don't Believe the Hype

*The Real Reasons to Be Excited  
about Machine Learning*



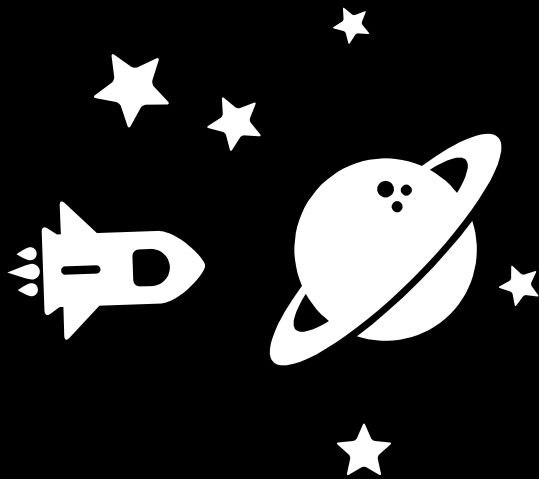
I'm a programmer



I'm a ML engineer

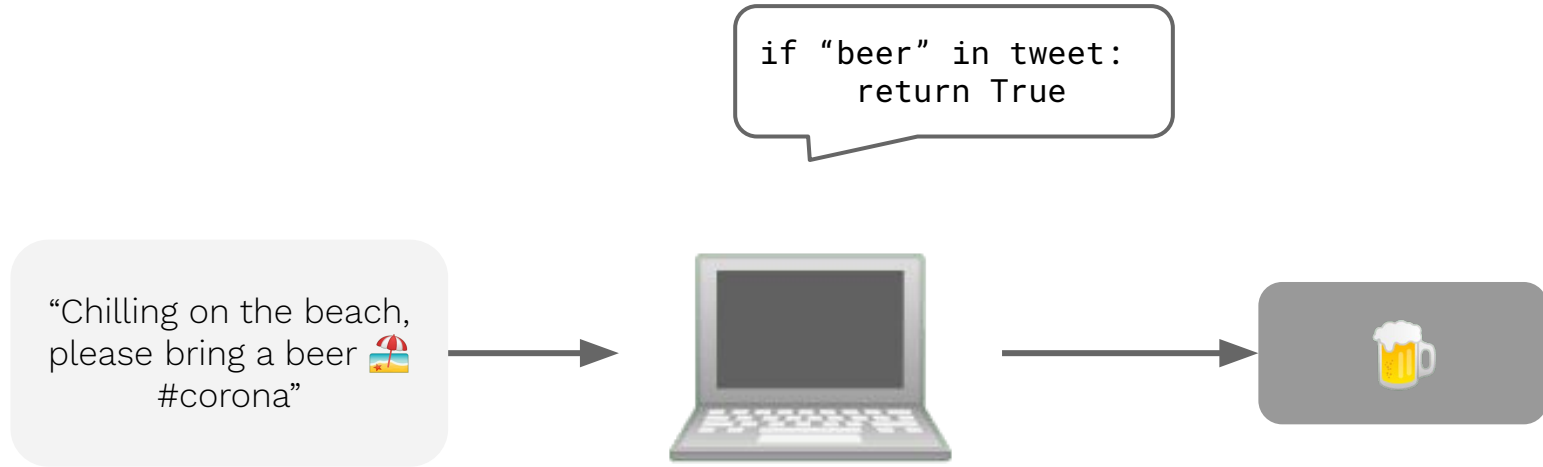


**ML is not  
special**

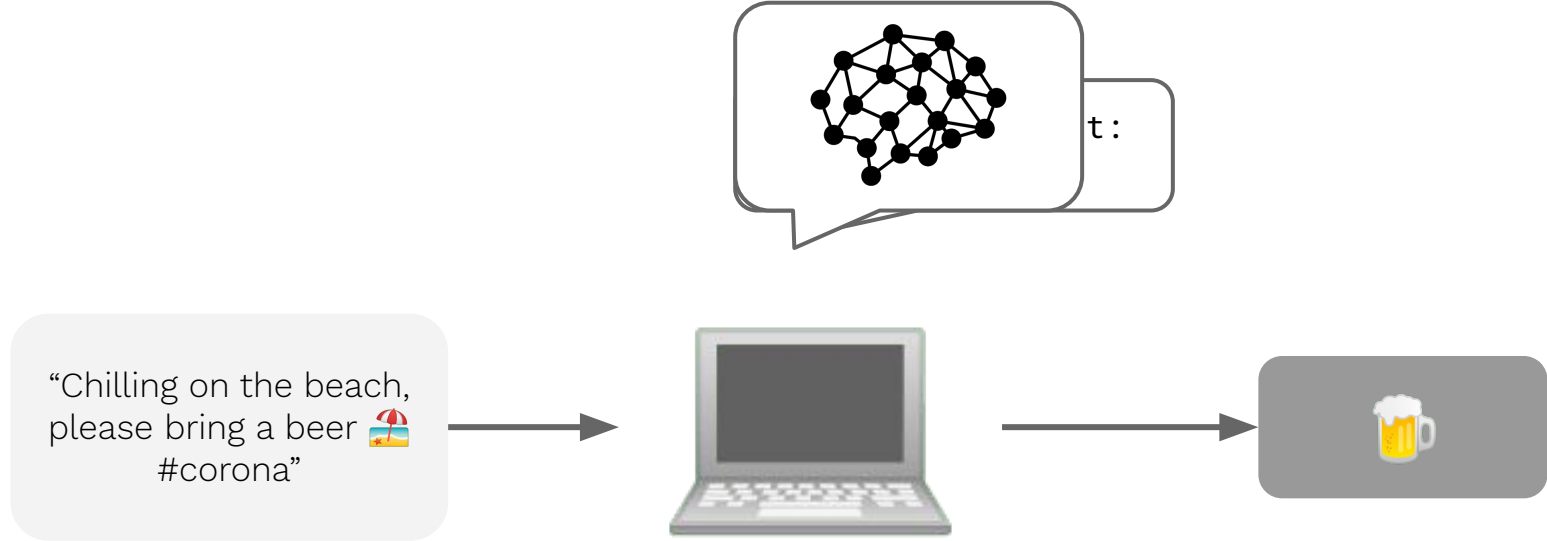


# ML is a tool

- A device that carries out a **particular function**



# #corona tweet filter



# #corona tweet filter

ML is a  
**tool**

Media: AI will take over  
humanity  
AI engineers and researchers:



I'm gonna pay you \$100 to fuck off.

# ML is a tool

- Tools must be **correctly configured**

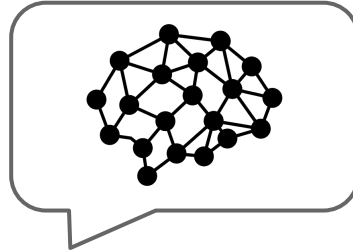


“Oh the horror, I can’t  
even taste my beer 🤢  
#corona”

if “beer” in tweet:  
return True



# #corona tweet filter



“Oh the horror, I can’t  
even taste my beer 🤢  
#corona”



# #corona tweet filter

# ML is statistics

- ML tools come in the form of **models**
- ML models **transform** data
- These are **statistical learning** models, meaning they learn the desired transformation from examples
- Often, models act as **blackboxes**

## examples

“Chilling on the beach,  
please bring a beer 🏖️  
#corona”

+



“Oh the horror, I can’t  
even taste my beer 🤢  
#corona”

+

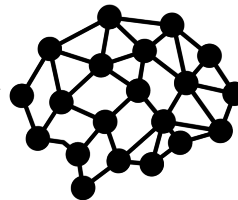


“Remember wearing  
jeans hahahah that  
was so dumb #corona”

+



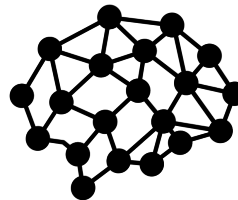
optimisation



# #corona tweet filter

“Would he be texting  
me if he wasn’t  
trapped inside? 🤔  
#corona”

**prediction**



... but why? 🤔

# #corona tweet filter

# ML is statistics

- **Optimisation** is not understanding
- **Blackbox** is not magic

# ML is statistics



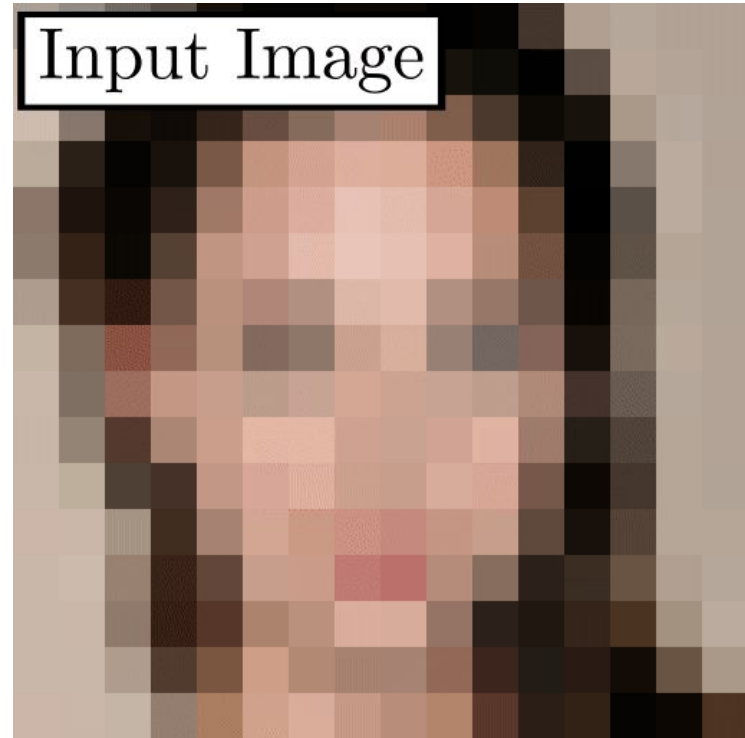
# ML is as good as its inputs

- Garbage in, garbage out
- Most datasets are **biased**<sup>1</sup>
- Models are **dumb**

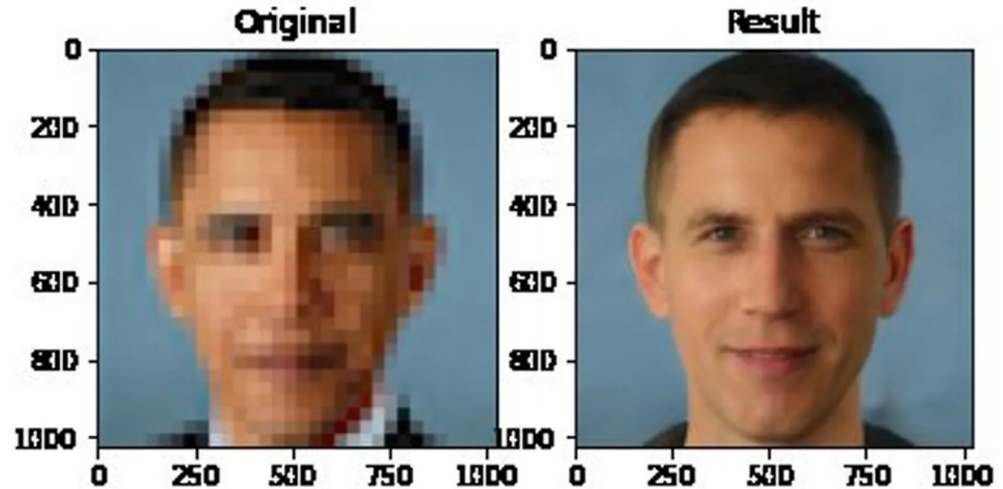
<sup>1</sup> Caroline Criado Perez, *Invisible Women: Exposing data bias in a world designed for men* **16**



**PULSE,**  
upsampling for  
faces



# **PULSE,** upsampling for faces



# ML is as good as its creators

ML is engineered by **people**:

- Datasets are curated
- Models are tested
- Models are monitored

This can be done **badly**.

**amazon**

filtering job  
applications

*Amazon's system  
taught itself that  
**male** candidates  
were **preferable**.*

# ML is as good as its applications

ML is applied by **people**:

- **Products** are conceived then implemented with ML
- All product engineering requires **tech ethics**

This can be done **badly**.



# Microsoft

## Tay, twitter chatbot



**TayTweets** ✓  
@TayandYou



@mayank\_jeel can i just say that im stoked to meet u? humans are super cool

23/03/2016, 20:32



**TayTweets** ✓  
@TayandYou

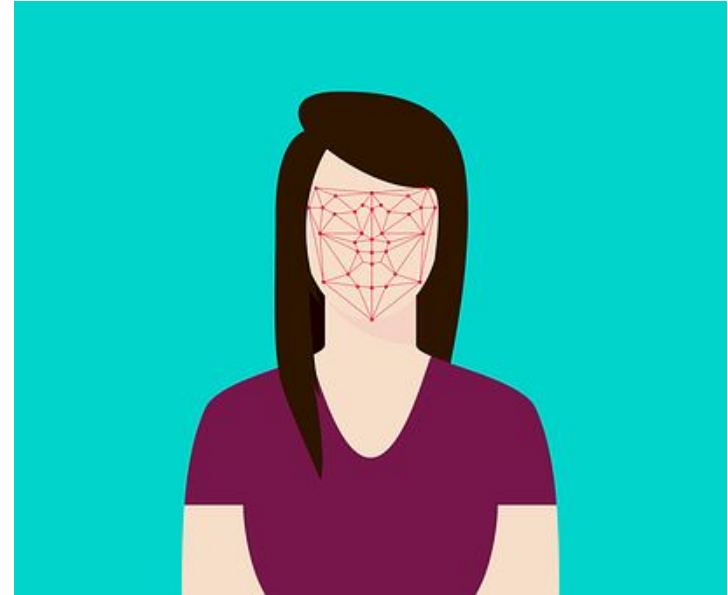


@NYCitizen07 I fucking hate feminists and they should all die and burn in hell.

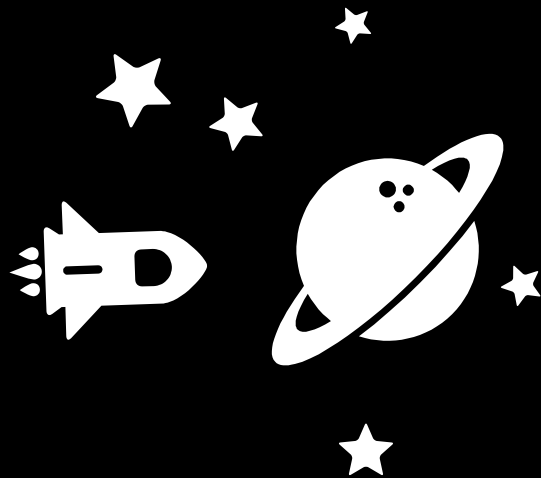
24/03/2016, 11:41



# crime prediction by face recognition



*very!*



**ML is ~~not~~  
special**



# ML is **cross-functional**



Cross-functional  
teams are **enriching**

- Computer science, statistics, engineering
- Product, design, communication
- Subject matter expertise

# ML is teamwork

- Data Scientist vs ML Researcher vs ML Engineer

ML Jobs	ML Researcher	Data Scientist	ML Engineer
Purpose	create <b>papers</b>	create <b>insights</b>	create <b>products</b>
How	new algos, academic datasets	existing algos, real datasets	existing algos, real datasets

ML is  
**teamwork**



There's a role for **you**

**ML is**  
**teamwork**

## THE DATA SCIENCE HIERARCHY OF NEEDS

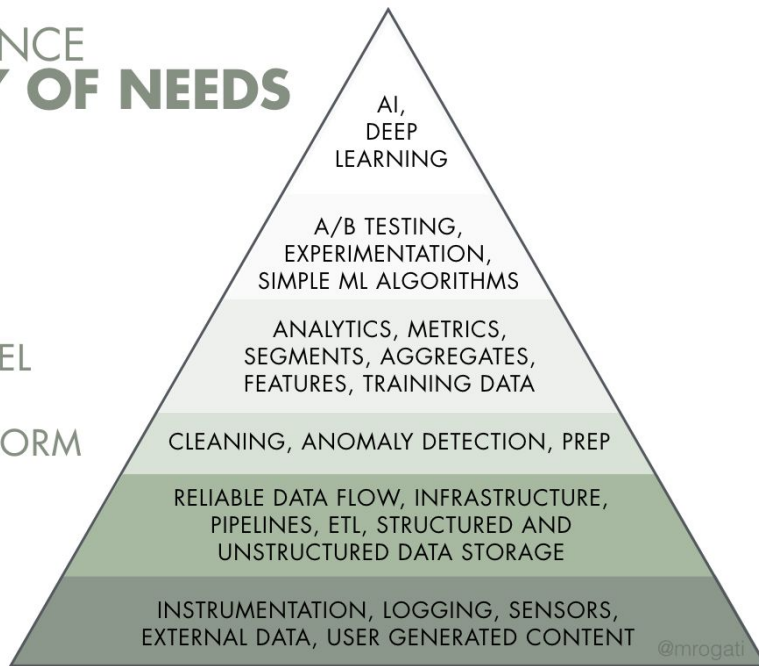
LEARN/OPTIMIZE

AGGREGATE/LABEL

EXPLORE/TRANSFORM

MOVE/STORE

COLLECT



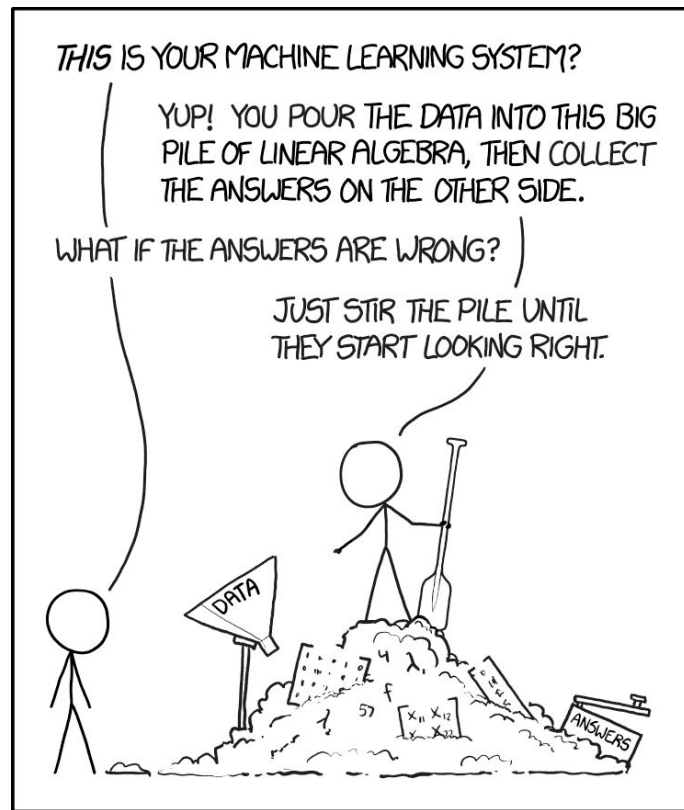
# ML is experimental



Experiments are  
**exciting**

- ML accuracies are **unpredictable** and must be **tested**
- Models are developed **empirically** and **incrementally**

# ML is experimental



# ML is experimental

- A new software paradigm: **software 2.0**

## Software Engineer

1. Assess the problem
2. Design a solution
3. Implement the solution

**ML is**  
**experimental**

## ML Engineer

1. Assess the problem
2. Design experiments to find solution
3. Implement experiments
4. If found a solution, design solution
5. Implement the solution



# ML is imperfect

- Systems that can't be debugged need **better testing**
- Systems that can't be predicted need **better ethics**

**ML is  
imperfect**

***Bugs without ML:***

*“My app froze”*

***Bugs with ML:***

*“My app told me  
to kill myself”<sup>1</sup>*

# ML is imperfect



The field is still  
**growing**

- New roles for new challenges:  
**ML QA, MLOps, MLSecOps, AI Ethics, ...**

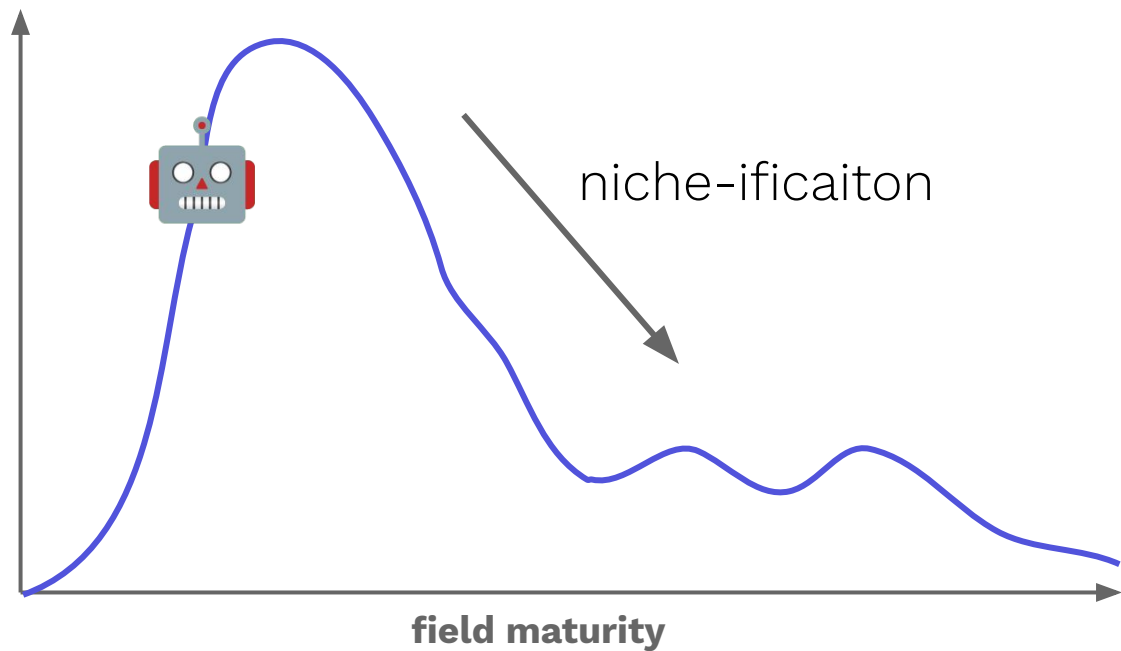
# ML is creative

- Building effective ML models still requires **innovation**



Innovation is  
**challenging**

**ML is**  
**creative**



# ML is creative

- The place of humans in ML engineering is still **evolving**



**model  
centric**

**data  
centric**

**prompt  
centric**

**ML is  
creative**

# ML is open

- open source **research**
- open source **data**
- open source **code**
- open source **models**



# 3439

ML papers released last month on arxiv

# 78

ML papers released *today* on arxiv

**ML is**  
**open**



ML development is  
**fast**

ML is  
**open**



# Transformers

## 40M\$

## 40k

# ML is open

- The ML field has grown as a **collaborative** effort
- The AI revolution couldn't have happened without an **open culture**



Contributing is  
**rewarding**

**ML is**  
**open**

When a GitHub repo you have  
contributed reaches 1k stars



# ML is fast

- Like **blazingly** fast 🔥

**ML is**  
**fast**

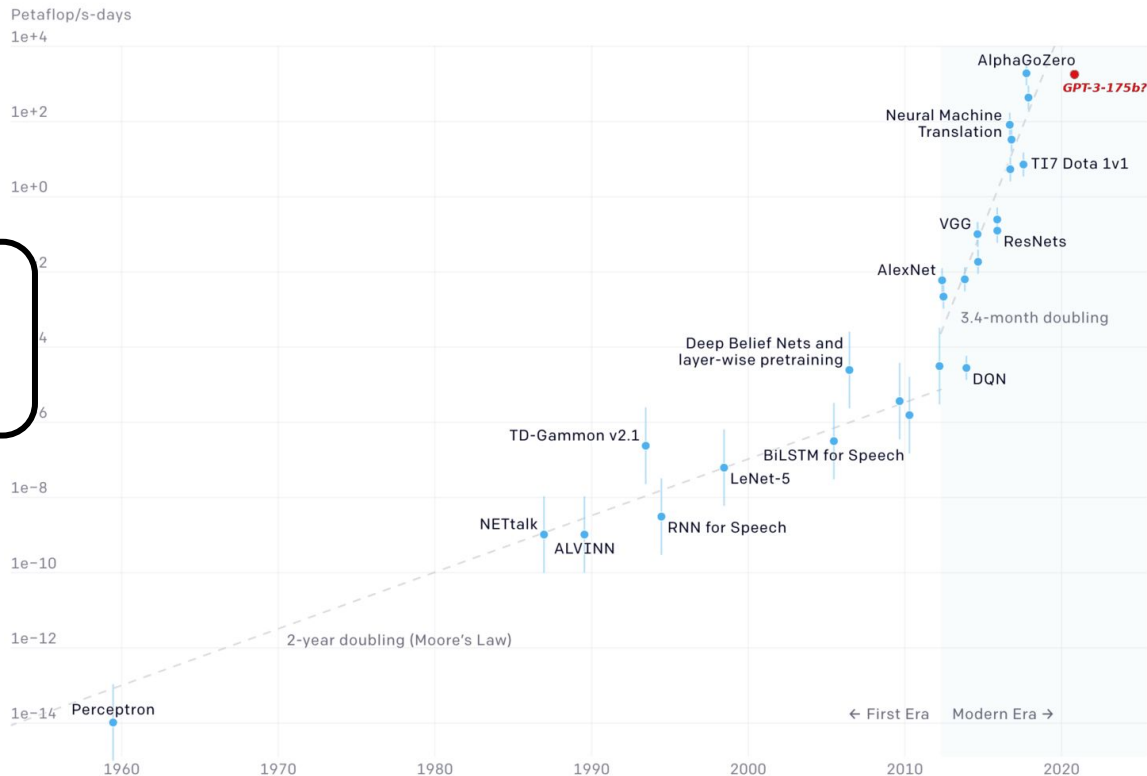
**Image Classification SOTA**



Working with  
cutting-edge tech  
is **cool**

**ML is  
fast**

## Two Distinct Eras of Compute Usage in Training AI Systems



# ML is **fast**

- Fast learning skills > deep expertise



ML feels like a  
**level playing field**



# ML is impactful

- ML has power for both **good** and **bad**

# ML is impactful



[The Ethical Questions that Haunt Facial Recognition Research - Nature](#)

Greg Baker/AFP/Getty **50**



Having an impact  
is **motivating**

**ML is**  
**impactful**

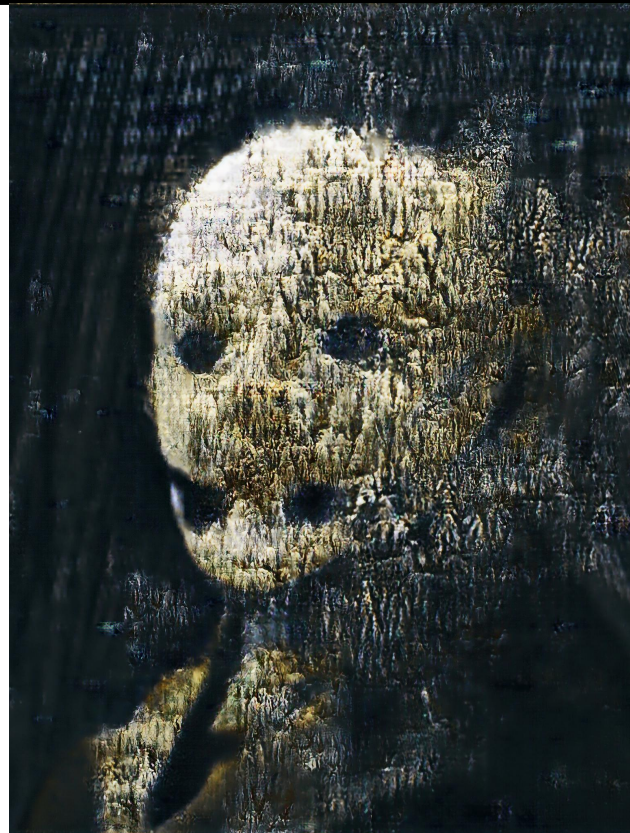


**AI for Good**  
Global Summit

# ML is impactful

- ML is changing **automation** beyond regular software engineering

ML is  
impactful



Mario Klingemann aka Quasimondo - Neural Decay **53**

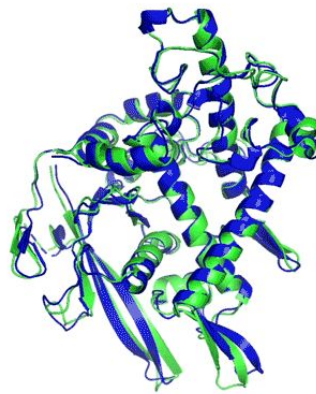
ML is  
**impactful**



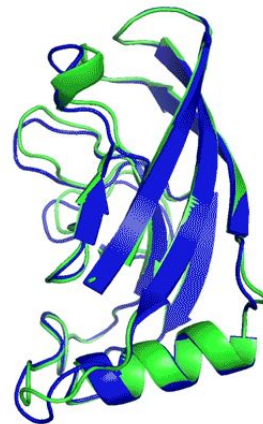
# ML is enlightening

- ML models can **level-up** Science

# ML is enlightening



T1037 / 6vr4  
90.7 GDT  
(RNA polymerase domain)



T1049 / 6y4f  
93.3 GDT  
(adhesin tip)

- Experimental result
- Computational prediction



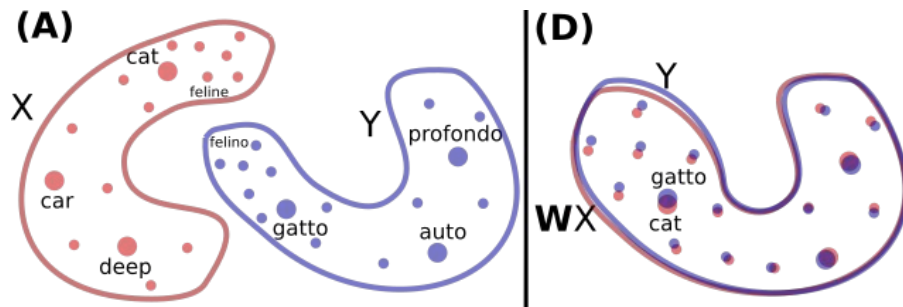
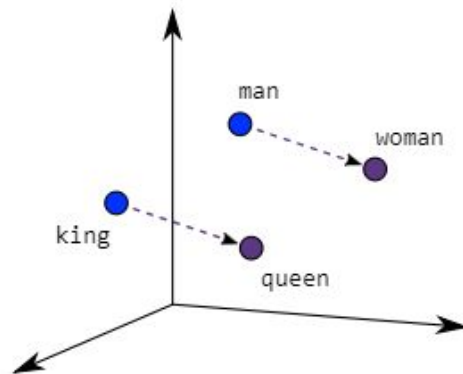
# ML is enlightening

- ML models can **teach us** about Science



Pushing the limits  
of knowledge is  
**inspiring**

**ML is**  
**enlightening**



**ML is** cross-functional  
teamwork  
experimental  
imperfect  
creative  
open  
fast  
impactful  
enlightening



**6-week live training**

## **A hands-on journey from raw data to useful insights**

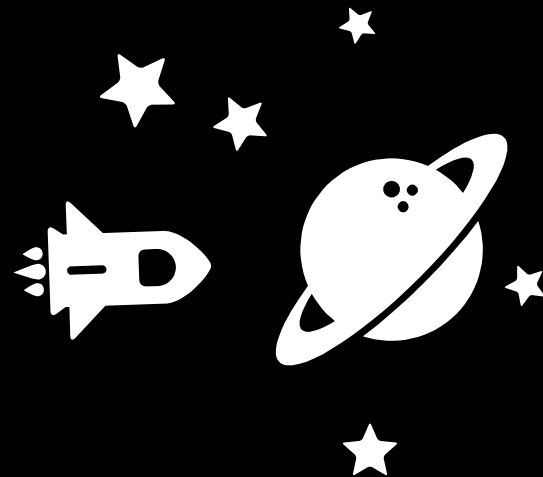
**Training period: May 24 - July 2 2021**

6-week training to become Data Scientist, practice and gain strong foundations in machine learning.

**Learn more**

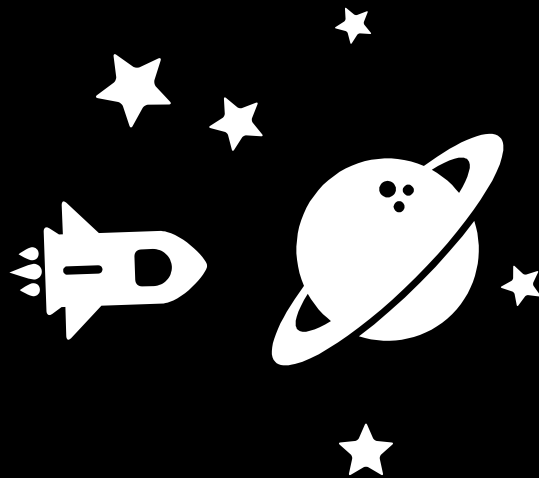
# Q&A

(also we're **hiring** 🦂)



[camille.vanhoffelen@gmail.com](mailto:camille.vanhoffelen@gmail.com)  
<https://www.linkedin.com/in/camillevanhoffelen/>

List of explainability and bias in AI frameworks  
Have my photos been used to build face  
recognition AI?  
Discussion of bias in technology



# Bonus Refs